



iSWITCH

SISTEMAS DE GESTIÓN DE ENERGÍA ENERGY MANA- GEMENT SYSTEMS

Wireless Zigbee repeater 2.0

For wireless energy saving systems to enhance the communications between the energy saver and the gateways.

WE MAKE
SENSE

ENKOA



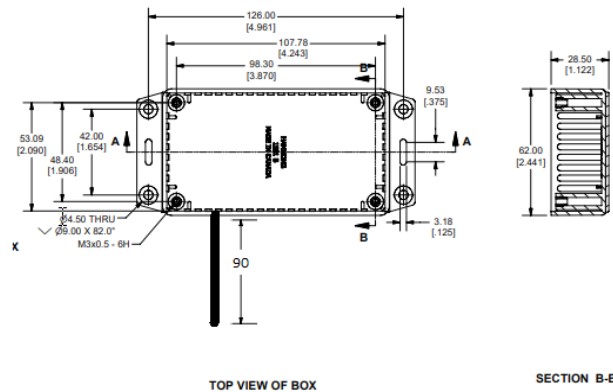
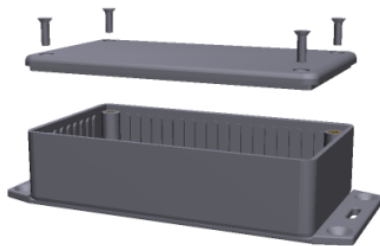
WIRELESS ZIGBEE SIGNAL REPEATER 2.0



Characteristics

DESCRIPTION	Zigbee signal repeater for iVIEW energy management system with extended antenna.
REFERENCE	REZxUIA
POWER	85-265 VAC (47-440 Hz)
CONSUMPTION	1,5W
COMMUNICATIONS	2,4GHz, IEEE 802.15.4 wireless
COMMUNICATION COVERAGE	External antenna with 100 m coverage outdoors without obstacles
INTERFACE	Red led for indications
OPERATING MODE	Inner button for synchronizing it with the gateway. Steady red led: repeater is working. Blinking red led: repeater is communicating.
DIMENSIONS	Bent antenna 138x80x32 mm. Straight antenna 137x160x32mm
HOUSING	Hammond box. GP ABS

Dimensions



Benefits

WIRELESS COMMUNICATION WITH THE ENERGY SAVER.

It works as connection between the energy saver and the gateway, for those places where signal is not received.

SMALL SIZE

SYNCHRONIZATION Easy to synchronize it with the gateway using a inner button.

WIDE COVERAGE 100 m outdoors without obstacles.



Enkoa System S.L.

Polígono Erramone 45, 20850 Mendaro. Gipuzkoa. Spain
T +34 943 757 000 | info@enkoa.com
www.enkoa.com

