



**iSWITCH**

---

# SISTEMAS DE GESTIÓN DE ENERGÍA ENERGY MANA- GEMENT SYSTEMS

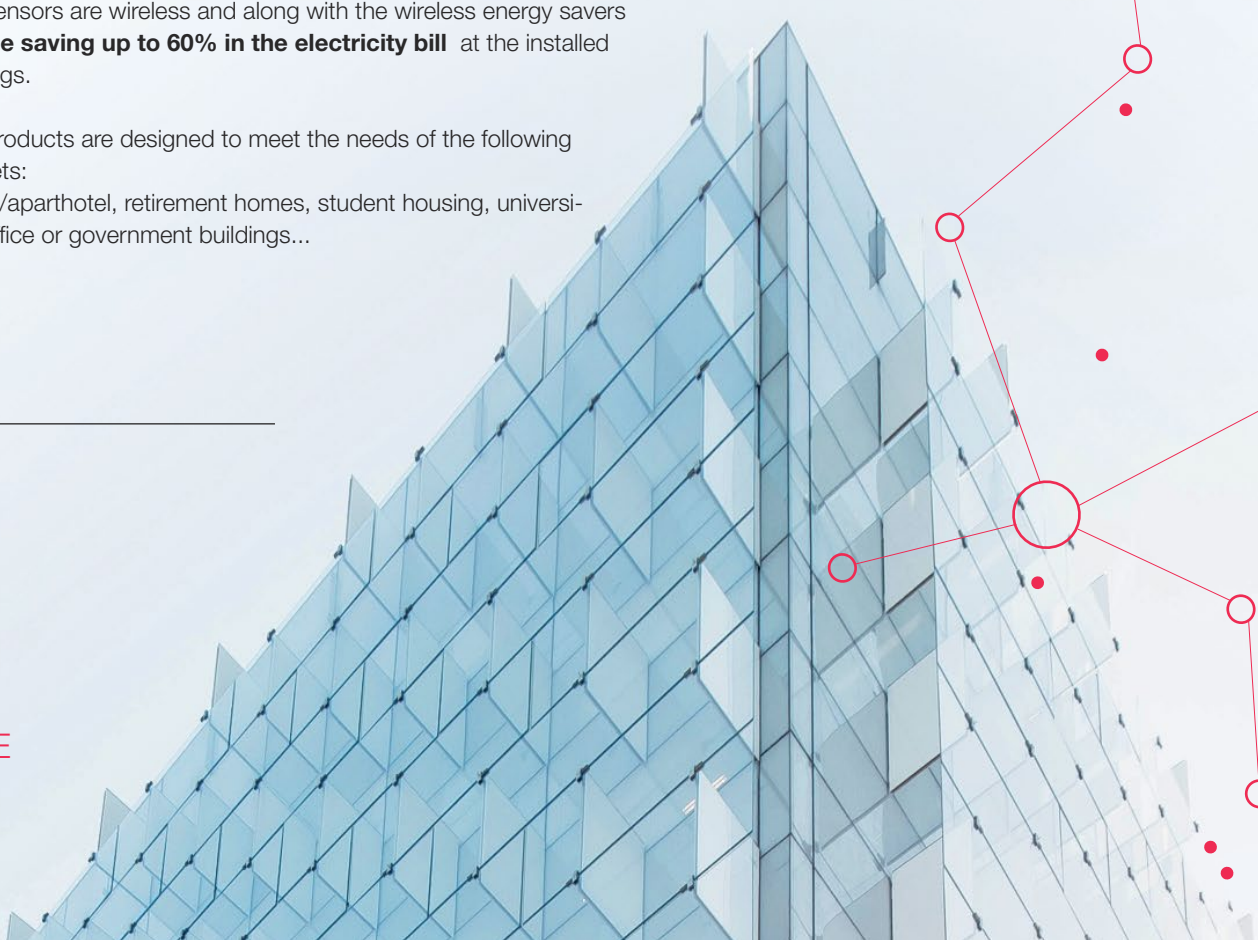
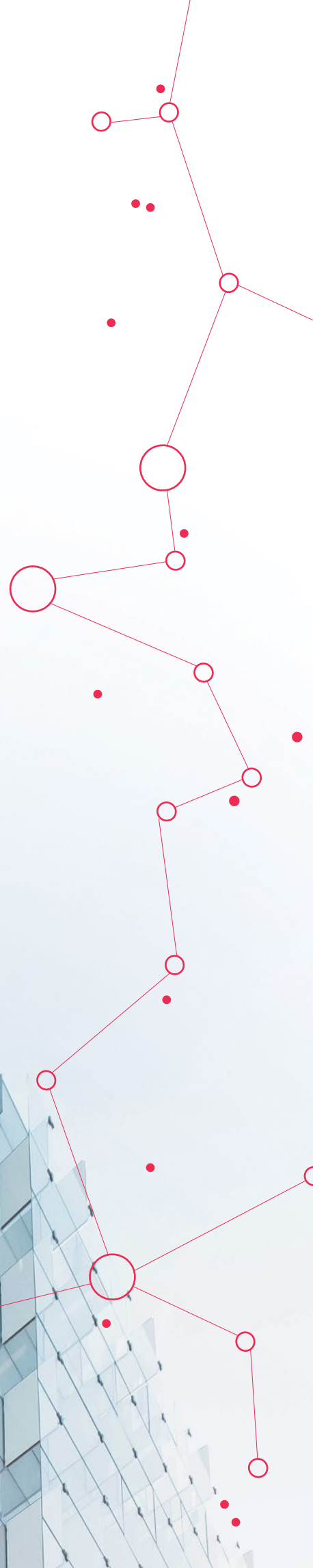
## Ceiling surface mounted motion sensor

Our sensors are wireless and along with the wireless energy savers **enable saving up to 60% in the electricity bill** at the installed buildings.

Our products are designed to meet the needs of the following markets:  
hotels/aparthotel, retirement homes, student housing, universities, office or government buildings...

---

**WE MAKE  
SENSE**





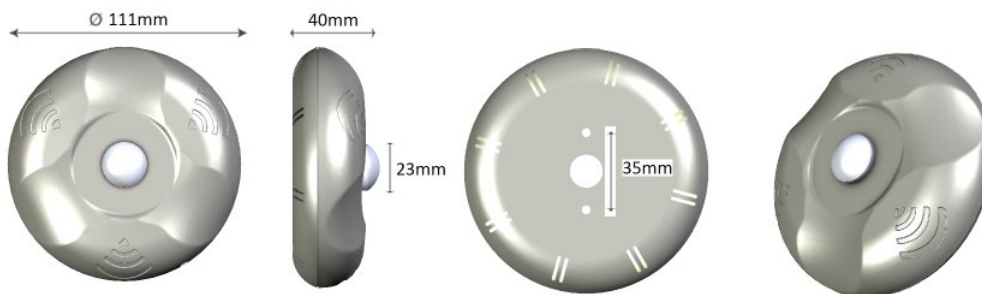
# CEILING SURFACE MOUNTED MOTION SENSOR



## Characteristics

DESCRIPTION	Ceiling surface mounted motion sensor
REFERENCE	SVOxlXS
POWER	3 batteries LR3 1,5 V ( AAA alkaline battery)
BATTERY LIFE	4 years (30uA average consumption, max. 20mA)*with alkaline batteries
COMMUNICATIONS	2,4GHz, IEEE 802.15.4 wireless
COMMUNICATION COVERAGE	10 m (distance to the energy saver)
INTERFACE	Red led
OPERATING TEMPERATURE	-10° to 50°
TECHNOLOGY	Infrared passive detector. Fresnel lens.
DETECTION COVERAGE	φ 6 m ( for a height of 3m)* coverage according to mounting height
ASSEMBLY HEIGHT	Between 2,5-4m
THERMOSTAT PRECISION	± 2° (-10° to 50°)
DIMENSIONS/ WEIGHT	φ 111 mm x 40 mm / 120 g

## Dimensions



## Benefits

**WIRELESS COMMUNICATION** . It detects the room occupancy and has wireless communication with the energy saver .

**SEVERAL SENSORS**. Several sensors can be installed in the room.

**STANDALONE** Battery operated.

**TEMPERATURE SENSOR** temperature sensor embedded.

**INSTALLATION**. Overhead surface mounted on the ceiling.



Enkoa System S.L.

Polígono Erramone 45, 20850 Mendaro. Gipuzkoa. Spain  
**T** +34 943 757 000 | info@enkoea.com  
[www.enkoea.com](http://www.enkoea.com)

