



iSWITCH

SISTEMAS DE GESTIÓN DE ENERGÍA ENERGY MANA- GEMENT SYSTEMS

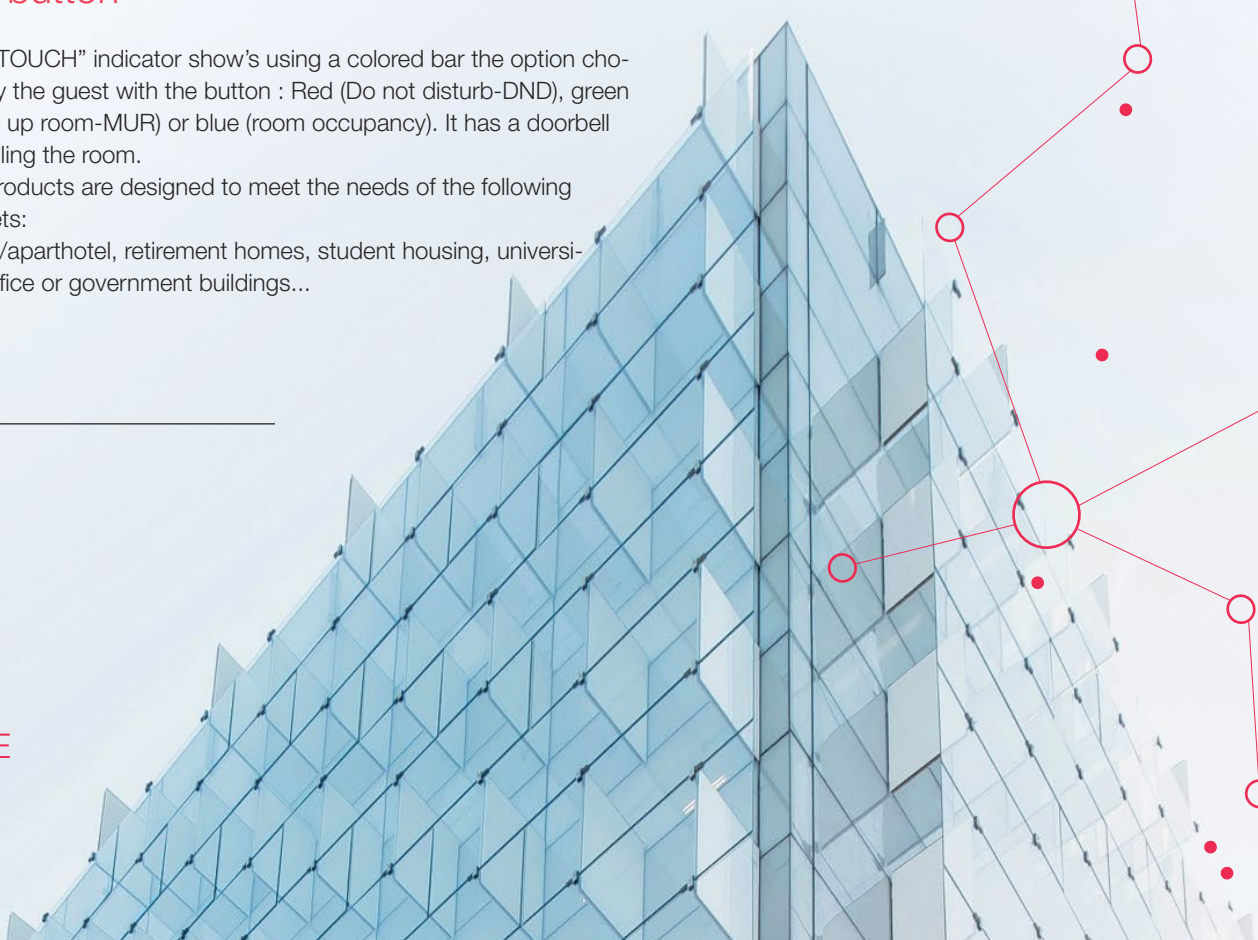
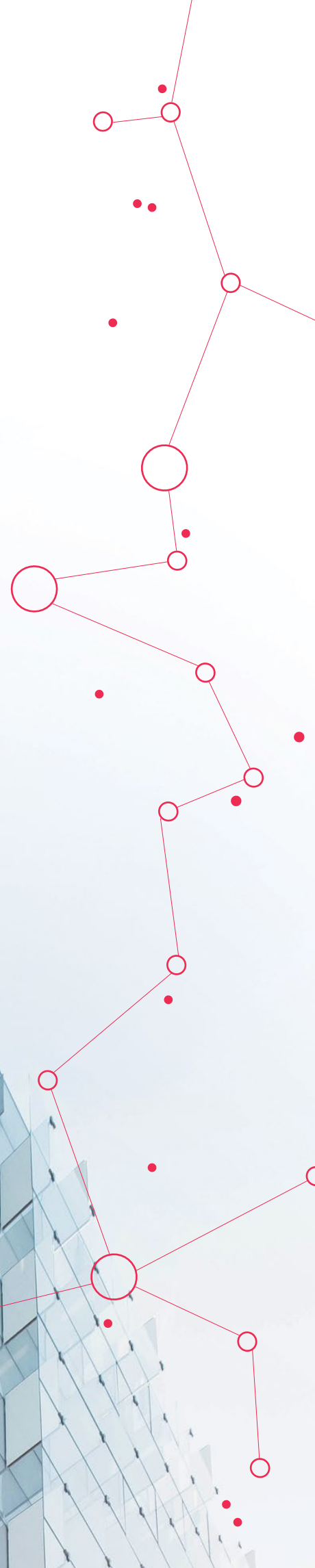
DND /MUR “iTouch” indicator with door- bell button

The “iTOUCH” indicator show's using a colored bar the option chosen by the guest with the button : Red (Do not disturb-DND), green (make up room-MUR) or blue (room occupancy). It has a doorbell for calling the room.

Our products are designed to meet the needs of the following markets:

hotels/aparthotel, retirement homes, student housing, universities, office or government buildings...

**WE MAKE
SENSE**



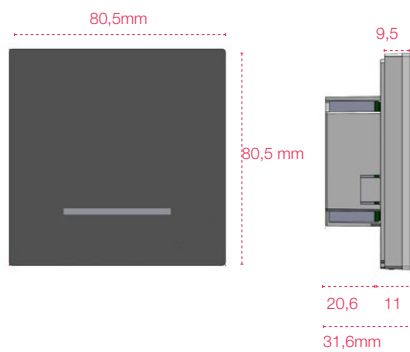


Characteristics

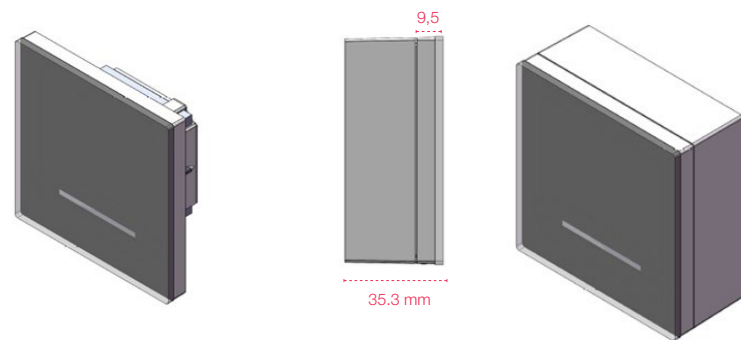
DESCRIPTION	DND/MUR "ITOUCH" indicator (outside the room) with doorbell
REFERENCIA	Recess model - DMTxIVF10303007 Surface accessory- CJACCTOUCHV0-1x
POWER	100 - 240 V~ 50/60 Hz
POWER CABLES	PCB Board Connector, rising clamp system/2.5mm ² max
COMMUNICATIONS	2,4GHz, IEEE 802.15.4 wireless
COMMUNICATIONS COVERAGE	10-50m (depends on obstacles/interference etc)
USER INTERFACE	<ul style="list-style-type: none"> · RGB inner bar to show the room status. · 20x50 mm capacitive button. · Configuration dip switch.
OPERATING TEMPERATURE	-10°C to 60 °C
HOUSING	Back cover: ABS fireproof material (according to norm UL 94 V-0). Front cover: PMMA according to UL94HB.
DIMENSIONS	Recessed model: 80,5 x 80,5 x 31,6 mm Surface model: 80,5 x 80,5 x 35,3 mm
WEIGHT	100 grs

Dimensions:

Recess model



Surface model



System benefits

STATUS INDICATOR. The bar shows the choice made by the guest with the button. Red (Do not disturb- DND) / Green (Make up room o MUR)/Blue (occupied room).

DOORBELL BUTTON. It has a doorbell that rings on the push button device in the room, so long as the client haven't pushed "do not disturb".

STANDALONE OPERATING WAY / ENERGY SAVER ENABLED OPERATING.

MODE CONFIGURATING SWITCHES : press mode, night mode, presence light, autonomous mode.