



**iSWITCH**

---

# SISTEMAS DE GESTIÓN DE ENERGÍA ENERGY MANA- GEMENT SYSTEMS

## Wireless Zigbee repeater 2.0

For wireless energy saving systems to enhance the communications between the energy saver and the gateways.

---

WE MAKE  
SENSE

**ENKOA**





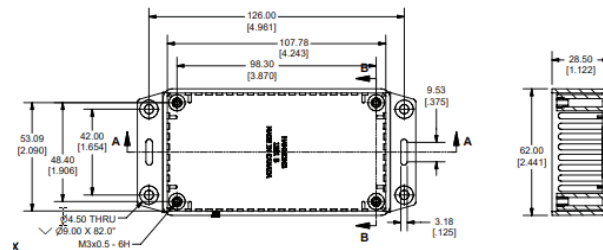
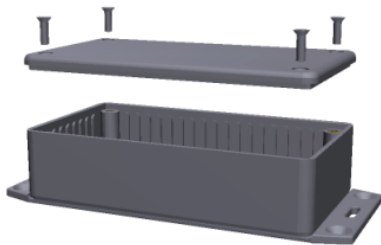
# WIRELESS ZIGBEE SIGNAL REPEATER 2.0



## Characteristics

DESCRIPTION	Zigbee signal repeater for iMEW energy management system with extended antenna.
REFERENCE	REZxUIA
POWER	85-265 VAC (47-440 Hz)
CONSUMPTION	1,5W
COMMUNICATIONS	2,4GHz, IEEE 802.15.4 wireless
COMMUNICATION COVERAGE	Inner antenna with 100 m coverage outdoors without obstacles
INTERFACE	Red led for indications
OPERATING MODE	Button for synchronizing it with the gateway. Steady red led: repeater is working. Blinking red led: repeater is communicating.
DIMENSIONS	138x80x32 mm.
HOUSING	Hammond box. GP ABS

## Dimensions



TOP VIEW OF BOX

SECTION B-B

## Benefits

**WIRELESS COMMUNICATION WITH THE ENERGY SAVER.**  
It works as connection between the energy saver and the gateway, for those places where signal is not received.

**SMALL SIZE**

**SYNCHRONIZATION** Easy to synchronize it with the gateway using a button.

**WIDE COVERAGE** 100 m outdoors without obstacles.



Enkoa System S.L.

Polígono Erramone 45, 20850 Mendaro. Gipuzkoa. Spain  
T +34 943 757 000 | info@enkoea.com  
[www.enkoea.com](http://www.enkoea.com)

